

PAGE	DESCRIPTION
1	Index
2	Power Supply
3-5	RZ/T2M
6	QSPI, Hyper Flash
7	EtherCAT
8	Interface
9	DI, DO
10	LED, Key
11	Encoder

RECH/SST

CN032-1 Industry EtherCAT Servo Controller

CN032-1 Industry EtherCAT Servo Controller
Index

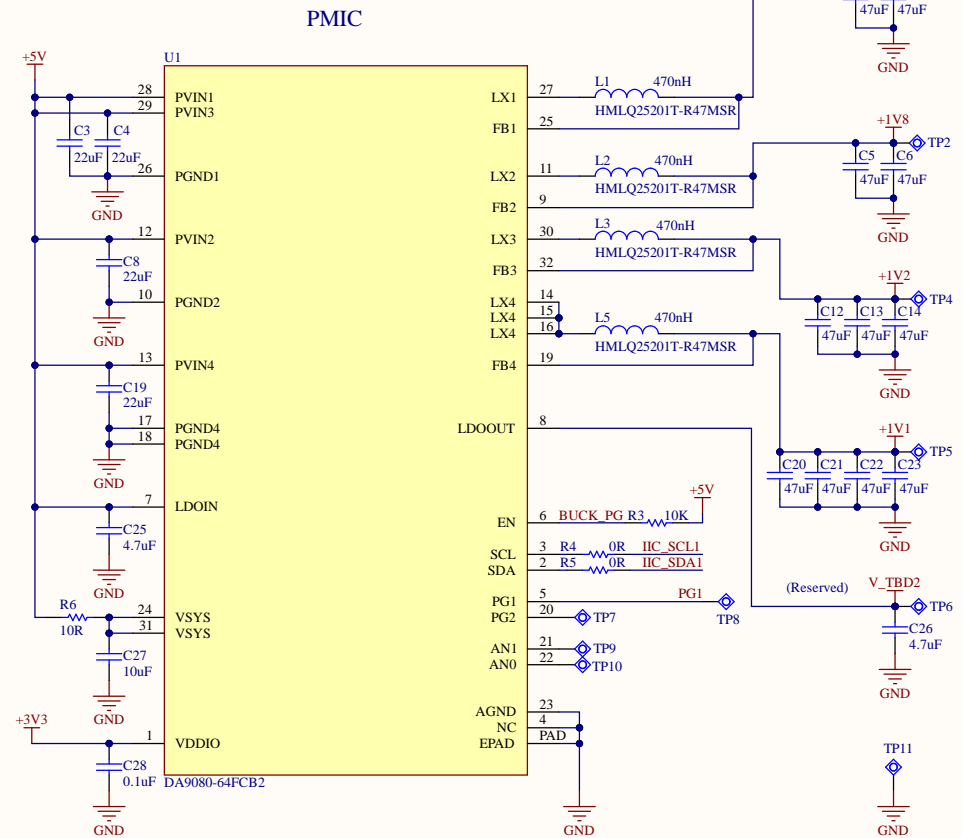
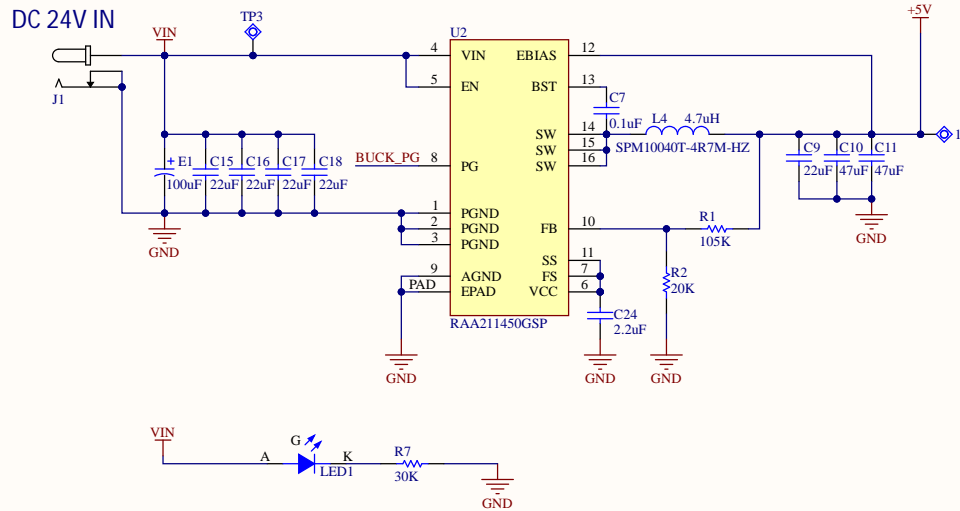
Version: V2.1	Author: SST	Size
Release Date: 2024/8/15	Sheet 1 of 11	Legal



<http://renesas.com>

DC 24V IN

24V --> 5V



CN032-1 Industry EtherCAT Servo Controller

Power Supply

Version: V2.1

Release Date: 2024/8/15

Author: SST

Sheet 2 of 11

Size

Legal

RENESAS

<http://renesas.com>

A

B

C

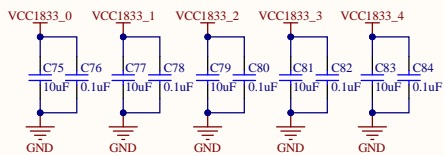
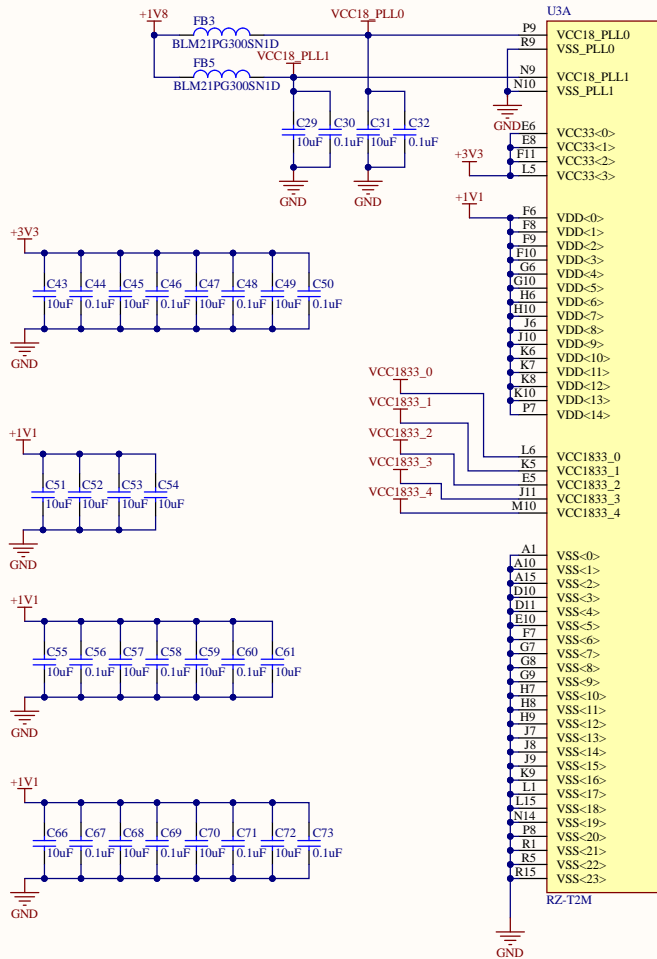
D

A

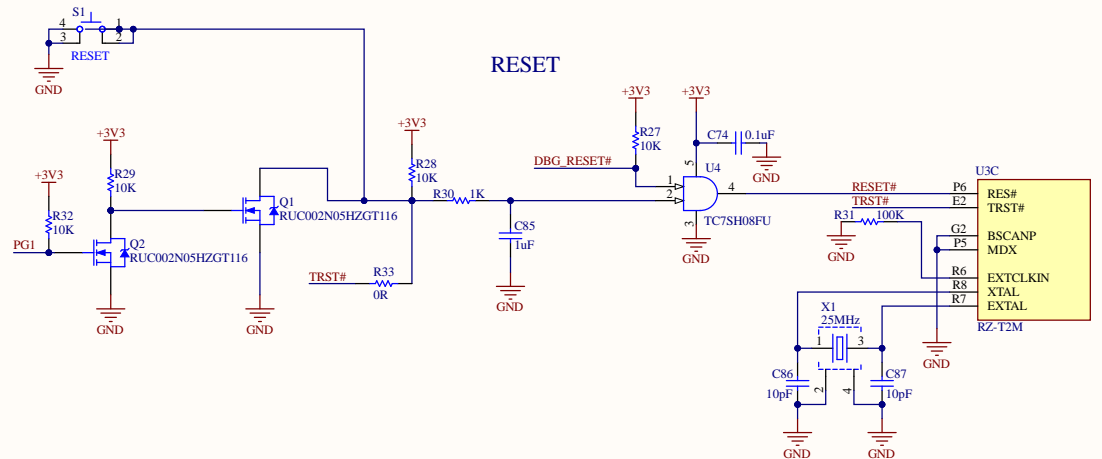
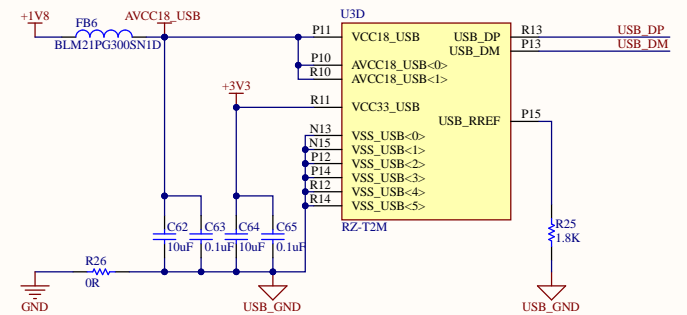
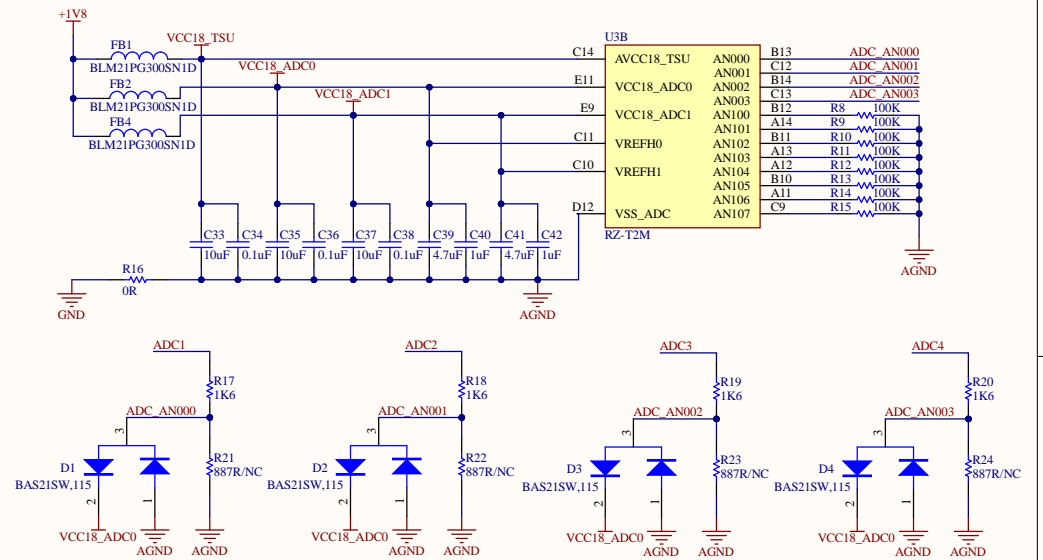
B

C

D



VCC1833 Power Supply



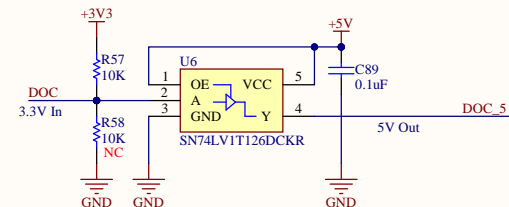
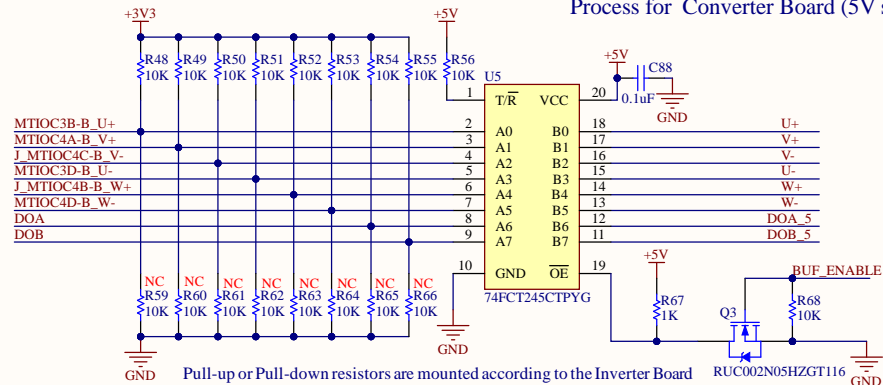
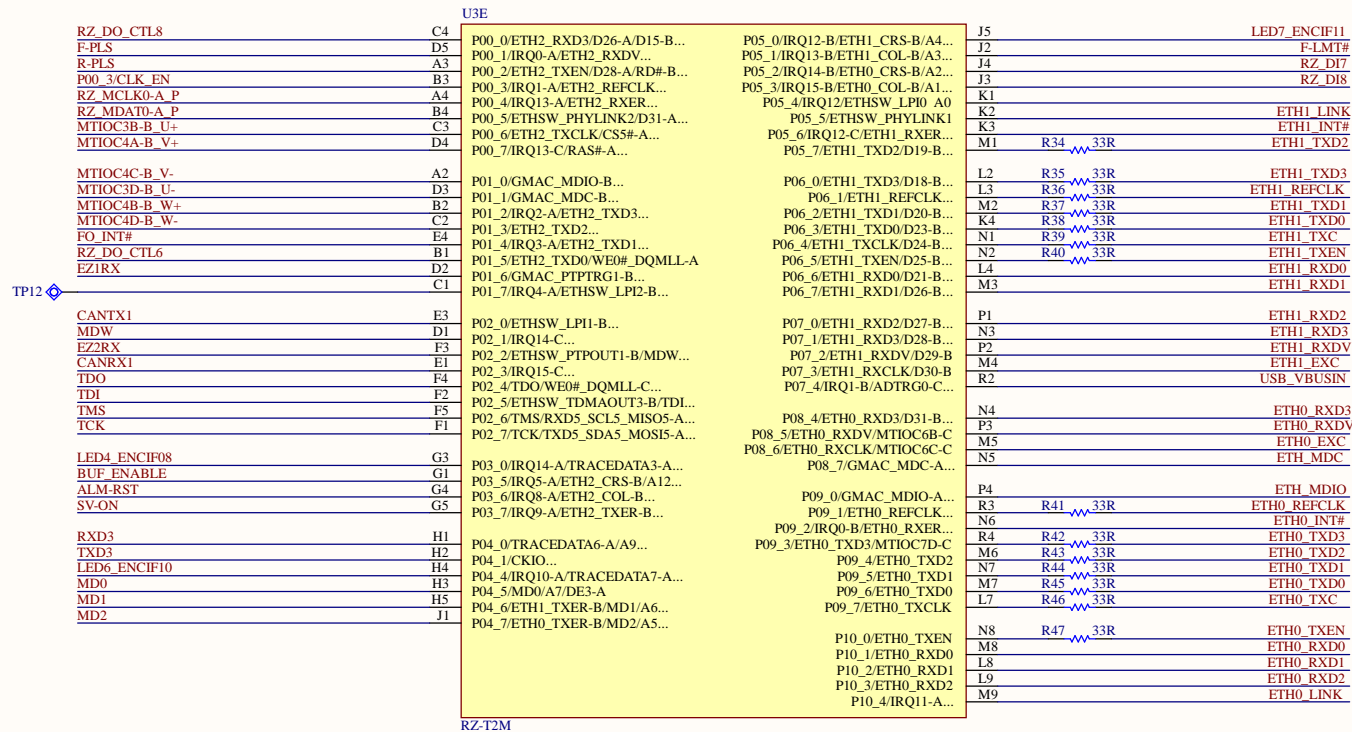
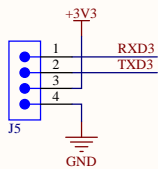
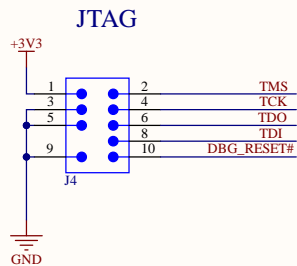
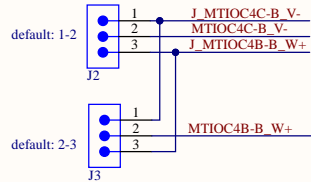
CN032-1 Industry EtherCAT Servo Controller
MPU_Reset

Version: V2.1
Release Date: 2024/8/15

Author: SST
Sheet: 3 of 11

Size
A3

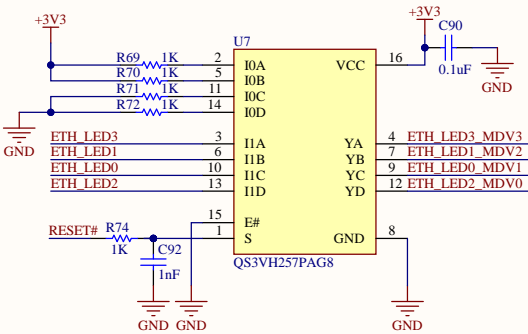
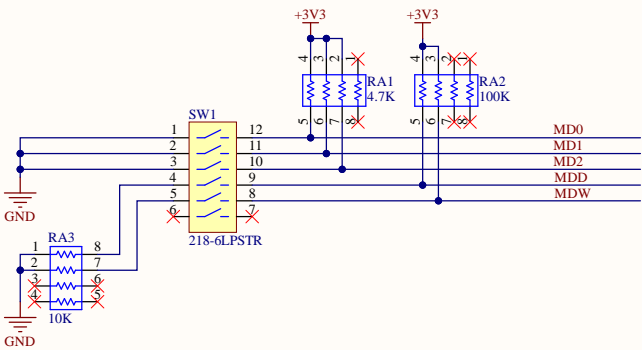
RENESAS
<http://renesas.com>



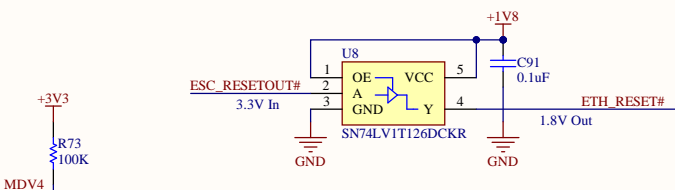
DSW-CATID0		N11	P12_4/XSPI1_RESET0...		P18_0/MTIOC4C-A/MTIOC4A-D...	E14	DSW-CATID1	
ESC_12CCLK-B		L10	P13_2/IRQ5-B/XSPI1_CS1...		P18_1/IRQ10-B/MTIOC3D-A...	D15	RD1_INT#	
ESC_12CDATA-B		N12	P13_3/XSPI1_CKP...		P18_2/MTIOC4B-A/MTIOC4D-D...	D14	DOC	
ESC_RESETOUT#		L12	P13_4/XSPI1_CKN...		P18_3/IRQ0-C/MTIOC4D-A...	E13	DOA	
EA1RX		M12	P13_5/XSPI0_WP1...		P18_4/IRQ1/MTICSU/TXD4	E12	R-LMT#	
EB1RX		M13	P13_6/XSPI0_WP0...		P18_5/TRACECTL/MTICSU/RXD4	D13	DOB	
EA2RX		M11	P13_7/XSPI0_ECS1...		P18_6/IRQ11-C/TRACECLK-A...	C15	RD2_INT#	
EB2RX		L13	P14_0/XSPI0_INT0...		P19_0/MDV4/USB_VBUSEN-C	B15	MDV4	
DSW-CATID2		L14	P14_1/XSPI0_INT1/ETH1_COL-C...		P20_1/ETHSW_TDMAOUT0-A/MDV0...	B9	ETH_LED2_MDV0	
LED_INT#		K12	P14_2/IRQ6-B/XSPI0_ECS0...		P20_2/ETHSW_TDMAOUT1-A/MDV1...	D8	ETH_LED0_MDV1	
DSW-CATID3		M14	P14_3/XSPI0_RST01...		P20_3/ETHSW_TDMAOUT2-A/MDV2...	D9	ETH_LED1_MDV2	
XSPI0_DS		J13	P14_4/XSPI0_DS/BS-A...		P20_4/ETHSW_TDMAOUT3-A/MDV3...	A9	ETH_LED3_MDV3	
XSPI0_CKN		J12	P14_5/XSPI0_CKN/CS3#/POE8#-B		P21_1/TRACEDATA0-B/D0...	B8	IIC_SCL1	
XSPI0_CKP		K13	P14_6/XSPI0_CKP/A21-B		P21_2/TRACEDATA1-B/D1...	C8	IIC_SDA1	
XSPI0_IO0		M15	P14_7/XSPI0_IO0/A22-B...		P21_3/TRACEDATA2-B/D2...	A8	MTIOC6C_CLK	
XSPI0_IO1		L11	P15_0/XSPI0_IO1/A23-B...		P21_4/TRACEDATA3-B/D3...	E7	RZ_MCLK2-C_W	
XSPI0_IO2		K14	P15_1/XSPI0_IO2/A24-B...		P21_5/IRQ6-A/TRACEDATA4-B...	C7	RZ_MDATA2-C_W	
XSPI0_IO3		K15	P15_2/XSPI0_IO3/A25-B...		P21_6/IRQ9-C/TRACEDATA5-B...	D7	RZ_MDATA3-C_V	
XSPI0_IO4		K11	P15_3/XSPI0_IO4/MTIOC8C-B...		P21_7/IRQ10-C/TRACEDATA6-B...	B7	RZ_MDATA3-C_V	
XSPI0_IO5		H13	P15_4/XSPI0_IO5/MTIOC8D-B...		P22_0/IRQ15-A/TRACEDATA7-B...	A7	RZ_MDATA3-C_V	
XSPI0_IO6		J14	P15_5/XSPI0_IO6/MCLK2-B		P22_1/TRACECTL-C/D8-A...	A6	LED5	
XSPI0_IO7		H12	P15_6/XSPI0_IO7/SSL12-A...		P22_2/IRQ4-C/TRACECLK-C...	C6	DSW-CATID5	
XSPI0_CS0		J15	P15_7/XSPI0_CS0/CTS5#-C...		P22_3/D10-A/MTIOC8D-C...	B6	ALM#	
XSPI0_CS1		G13	P16_0/XSPI0_CS1/ETH0_TXER-C...		P23_7/ETH2_RXD0/D22-A/D11-B...	D6	RZ_DO_CTL5	
EZITX		H11	P16_1/XSPI0_RESET0...		P24_0/ETH2_RXD1/D23-A/D12-B...	A5	RXD1	
EZ1EN		H14	P16_2/NMI-B/XSPI0_RESET1...		P24_1/ETH2_RXCLK/D24-A/D13-B...	B5	RZ_DO_CTL7	
EB1TX		G12	P16_3/IRQ7-B/XSPI0_RST00...		P24_2/ETH2_RXD2/D25-A/D14-B...	C5	TXD1	
RS485/TXD0		H15	P16_5/MTICSU-A...					
RS485/RXD0		G11	P16_6/IRQ8-B/MTICS5V-A...					
RS485/DR		G14	P16_7/MTICS5W-A/SCK0-B					
MDD		F12	P17_0/MDD/ESC_IRQ-B...					
DSW-CATID4		F14	P17_3/TRACECTL-B/GTETRGA-A...					
LEAD		F13	P17_4/TRACECLK-B/MTIOC3C-A...					
Z/TX		F15	P17_5/RSTOUT#/MTIOC3A-A...					
EB1EN		G15	P17_6/MTIOC3B-A/GTIOC1A-A...					
LAG		E15	P17_7/MTIOC4A-A/MTIOC4C-D...					

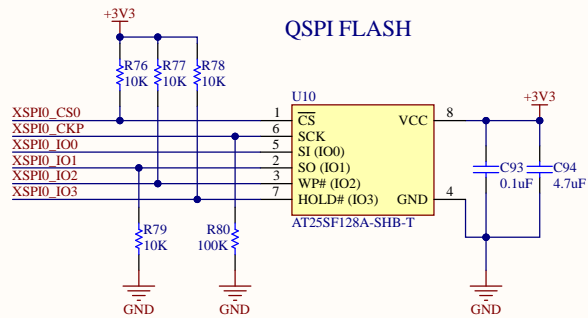
RZ-T2M

MODE SW

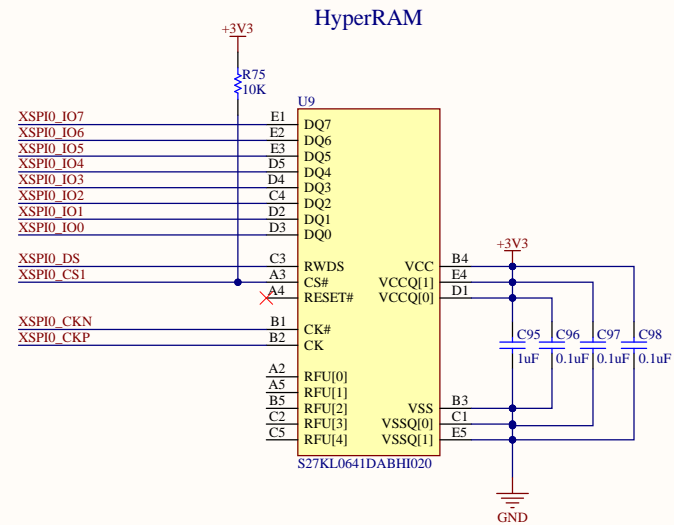
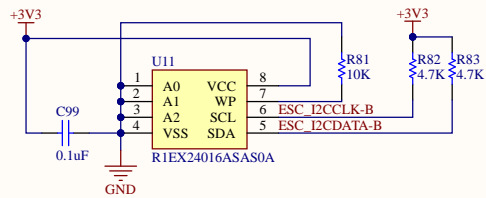


Level Shift for PHY RESET Control





EEPROM



CN032-1 Industry EtherCAT Servo Controller

QSPI, Hyper Flash, EEPROM

Version: V2.1

Release Date: 2024/8/15

Author: SST

Sheet 6 of 11

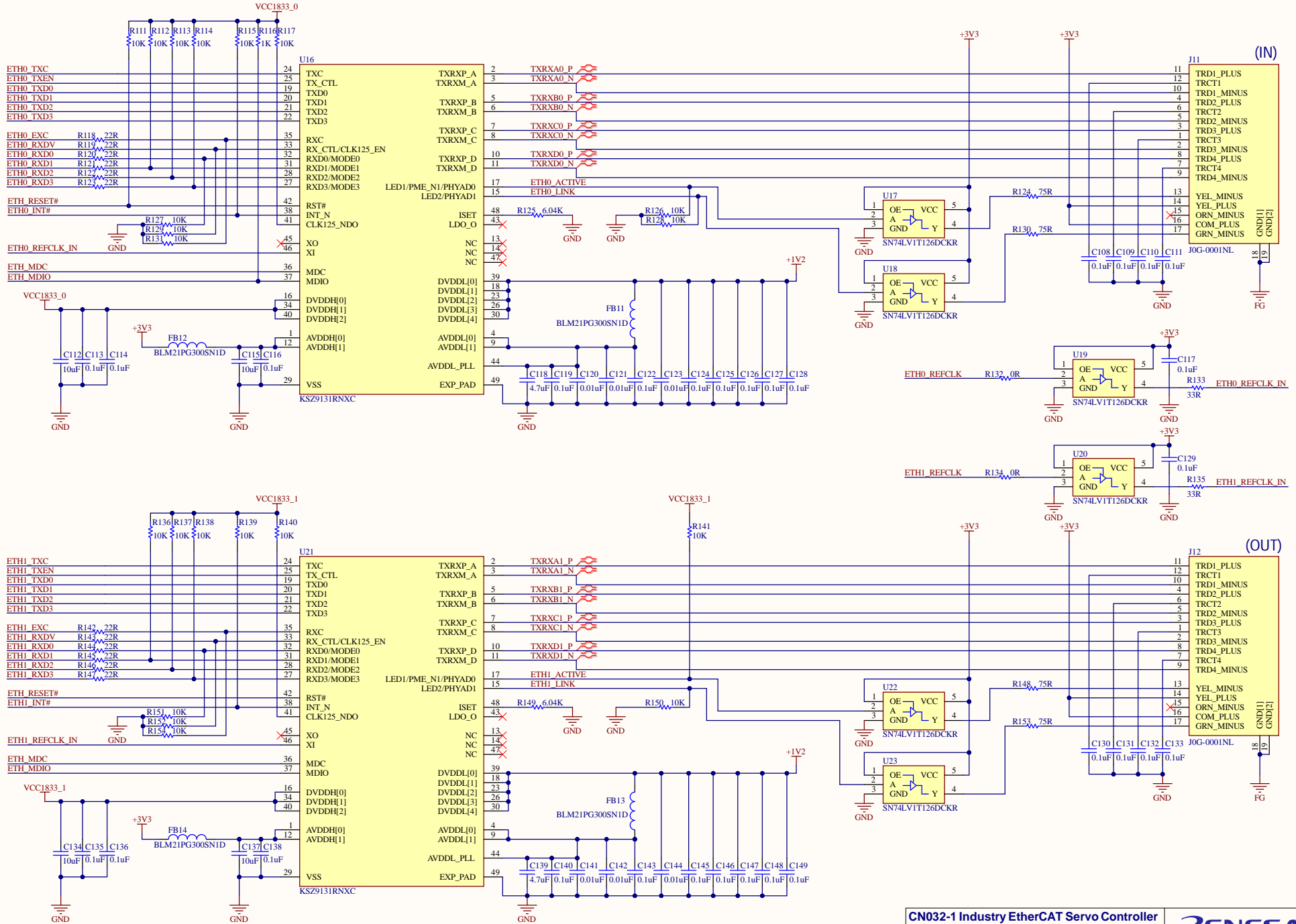
Size

Legal

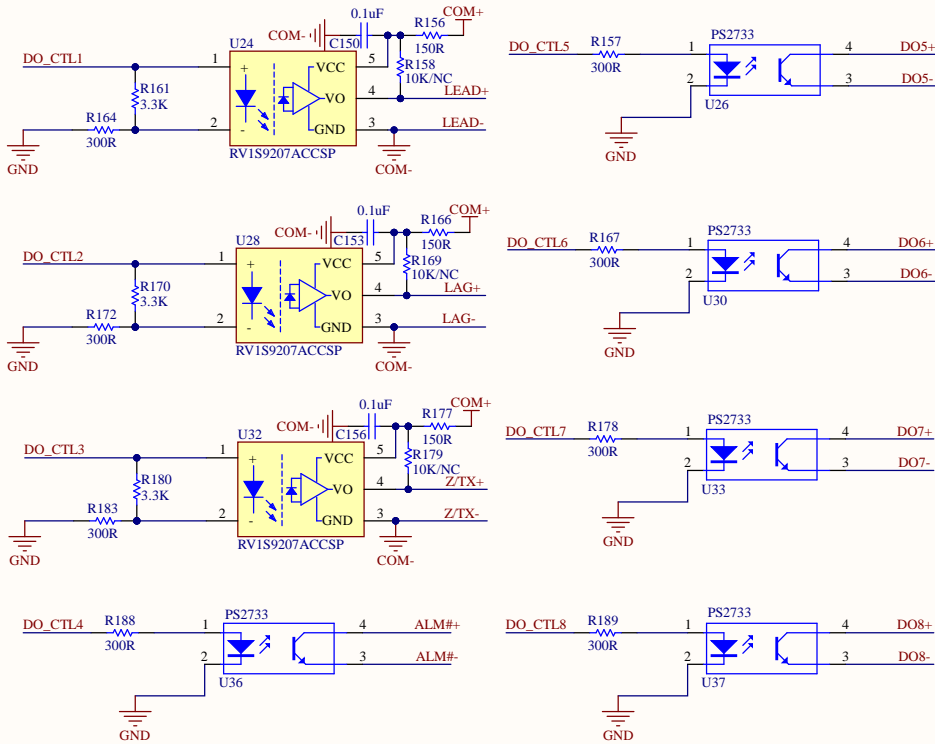
RENESAS

<http://renesas.com>

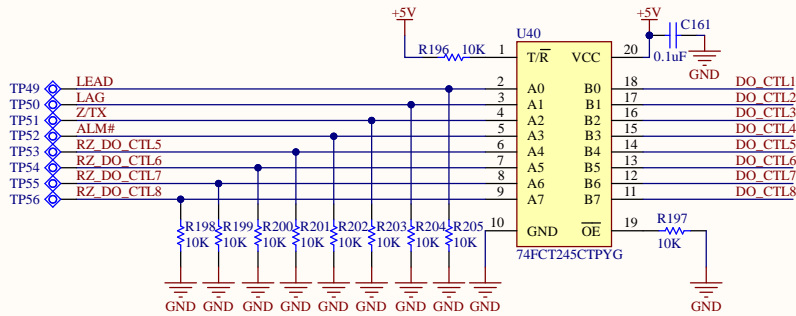
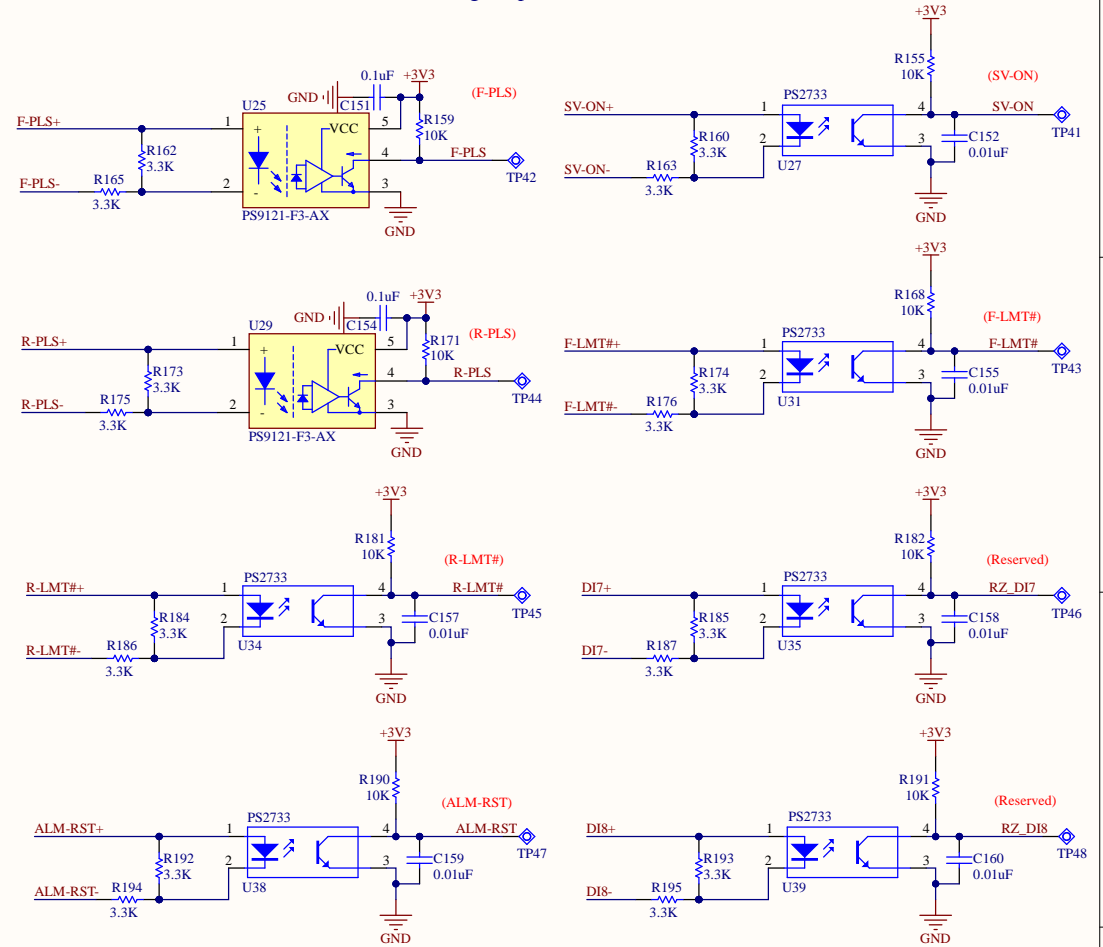
EtherCAT Interface x 2



Digit Output x 8



Digit Input x 8



CN032-1 Industry EtherCAT Servo Controller
DI and DO

Version: V2.1
Release Date: 2024/8/15

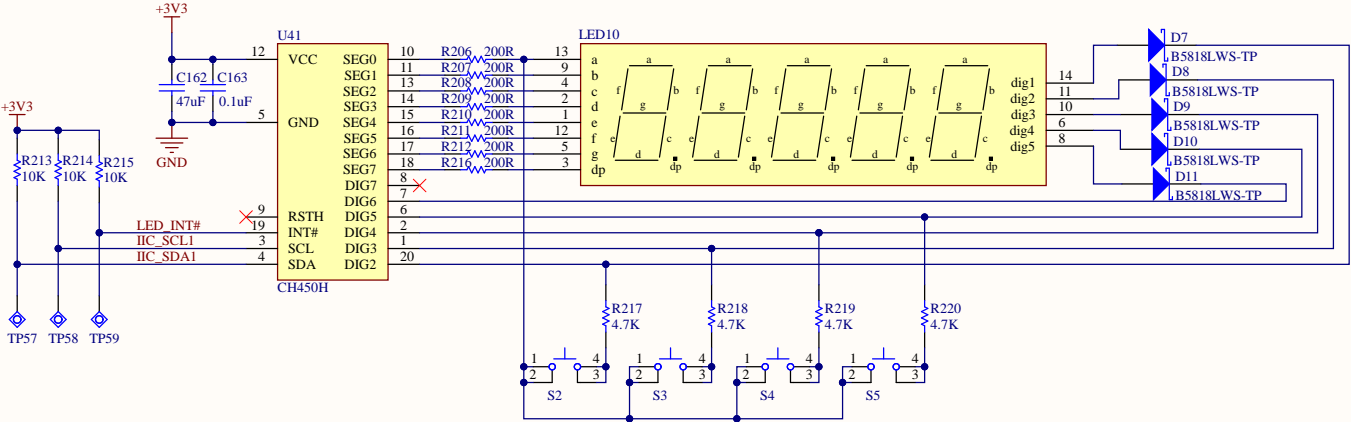
Author: SST
Sheet 9 of 11

Size
Legal

RENESAS

<http://renesas.com>

LED Display



CN032-1 Industry EtherCAT Servo Controller

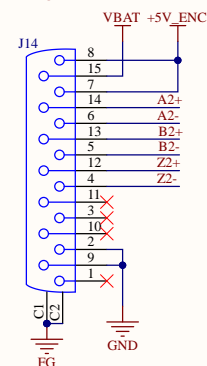
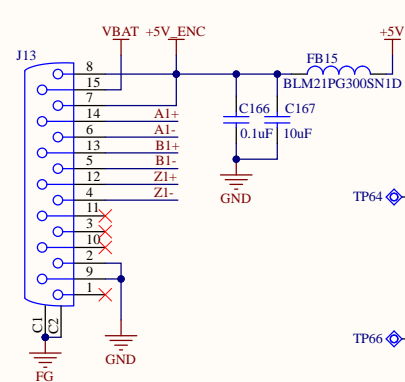
LED and Keys

Version: V2.1	Author: SST	Size
Release Date: 2024/8/15	Sheet 10 of 11	Legal

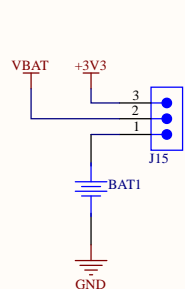
RENESAS

<http://renesas.com>

Encoder Interface x2

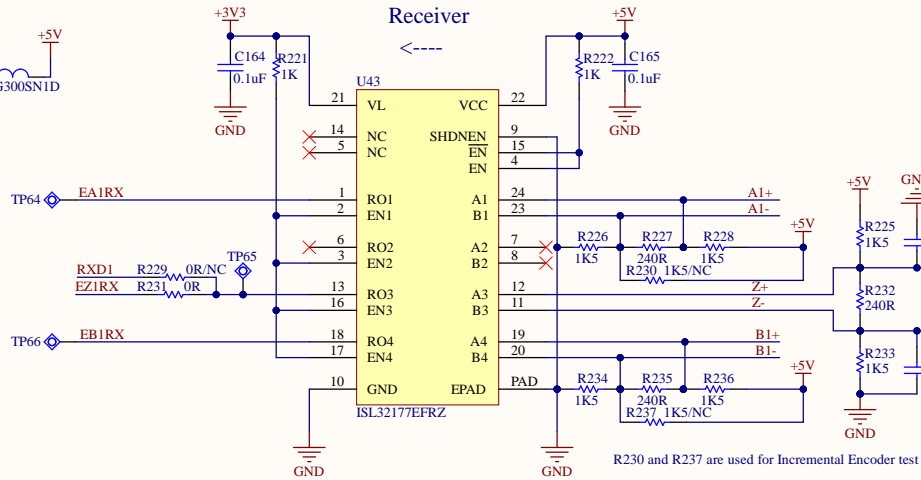


Encoder Battery Power Supply



Receiver

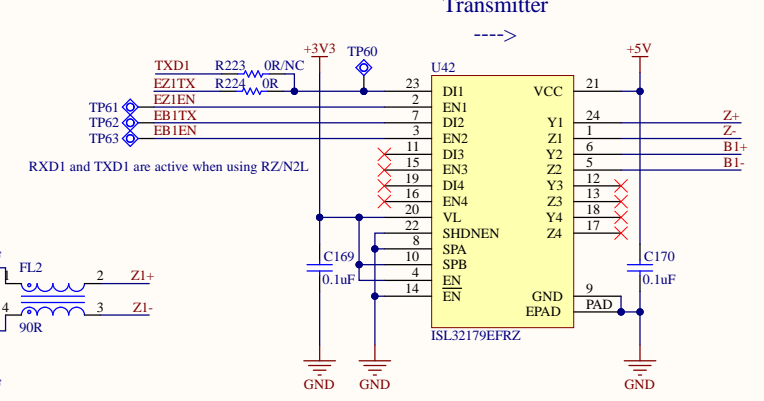
<---



R230 and R237 are used for Incremental Encoder test

Transmitter

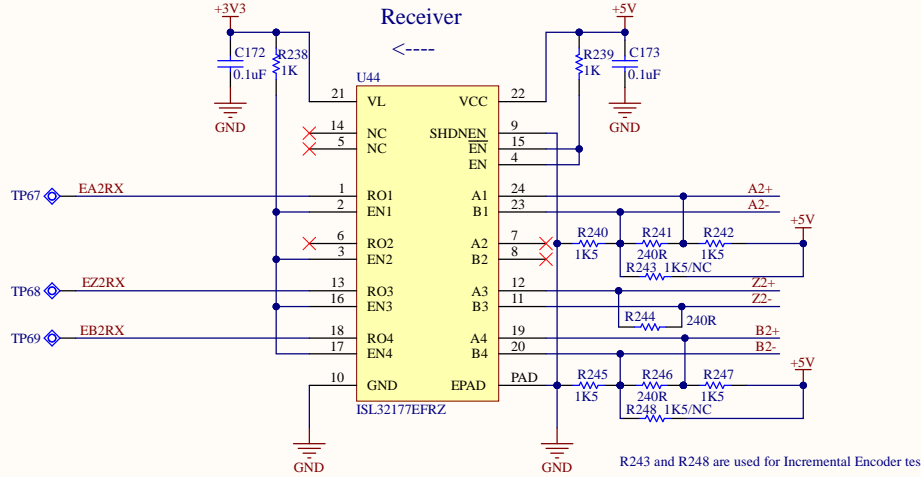
---->



RXD1 and TXD1 are active when using RZ/N2L

Receiver

<---



R243 and R248 are used for Incremental Encoder test

CN032-1 Industry EtherCAT Servo Controller

Encoder		
Version: V2.1	Author: SST	Size
Release Date: 2024/8/15	Sheet 11 of 11	Legal

<http://renesas.com>